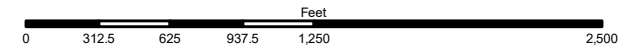
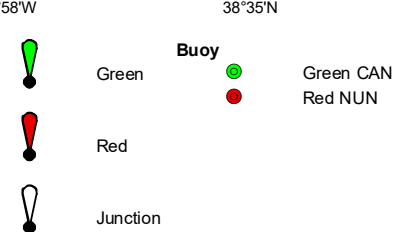
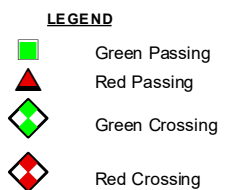
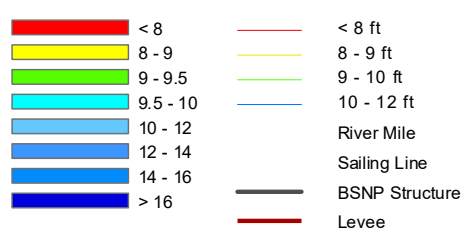
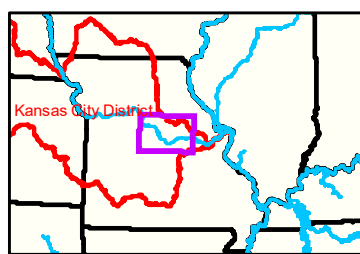


Notes

Jefferson City Gage = 6.8 at time of collection 29 September 2020

Gage\_L



**NOTES:**  
 Horizontal Coordinate System:  
 World Geodetic System of 1984 (WGS84), projected to the  
 Universal Transverse Mercator (UTM) Zone 15 North.  
 Distance units in U.S. Survey Feet

Vertical Datum:  
 Soundings are shown in feet and indicated depths  
 are referenced to water surface at time of collection.

The information depicted on this map represents the results of a survey  
 conducted on the date indicated and can only be considered to  
 represent the general condition existing at that time.

The location of navigation aids are based on and provided by  
 the U.S. Coast Guard.



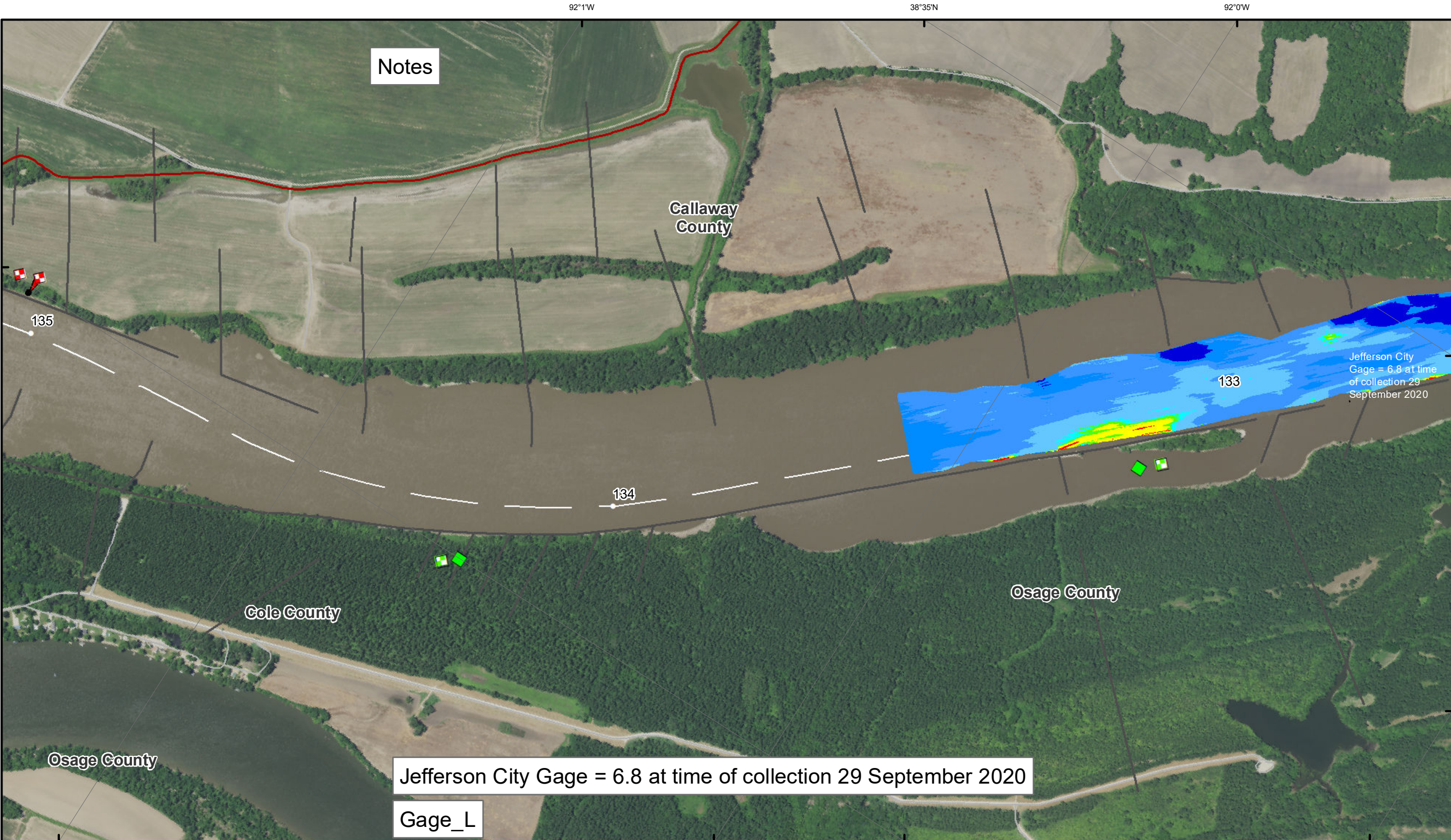
**DISCLAIMER:** The U.S. Army Corps of Engineers (USACE) provides this information as a service to the public. It is not intended to be used for any purpose other than that for which it was intended. The USACE makes no warranty, express or implied, regarding the accuracy, reliability, or completeness of the information provided. The USACE is not responsible for any errors or omissions in this information. The user assumes all liability for any use of this information. The USACE is not responsible for any damage or injury resulting from the use of this information. The USACE is not responsible for any loss of data or information resulting from the use of this information. The USACE is not responsible for any loss of data or information resulting from the use of this information. The USACE is not responsible for any loss of data or information resulting from the use of this information.

KANSAS CITY DISTRICT MISSOURI RIVER AREA OFFICE	
Submitted by:	MRAO
Reviewed by:	MRAO
Approved by:	MRAO

**Survey Information**  
 MO\_02\_LMR  
 MO\_02\_LMR\_20200929\_CS\_132\_5\_133\_5\_SORT  
 29 September 2020

**Sheet Number**  
 15 of 46

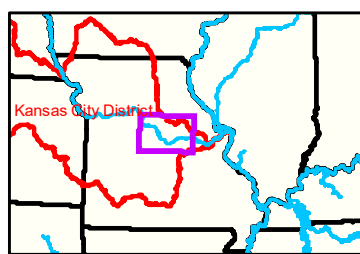




Notes

Jefferson City Gage = 6.8 at time of collection 29 September 2020

Gage\_L



**LEGEND**

	< 8		< 8 ft		Green Passing		Green		Green CAN
	8 - 9		8 - 9 ft		Red Passing		Red		Red NUN
	9 - 9.5		9 - 10 ft		Green Crossing		Junction		
	9.5 - 10		10 - 12 ft		Red Crossing				
	10 - 12		River Mile						
	12 - 14		Sailing Line						
	14 - 16		BSNP Structure						
	> 16		Levee						

**Buoy**

0 312.5 625 937.5 1,250 2,500 Feet



**NOTES:**  
 Horizontal Coordinate System:  
 World Geodetic System of 1984 (WGS84), projected to the  
 Universal Transverse Mercator (UTM) Zone 15 North.  
 Distance units in U.S. Survey Feet

Vertical Datum:  
 Soundings are shown in feet and indicated depths  
 are referenced to water surface at time of collection.

The information depicted on this map represents the results of a survey  
 conducted on the date indicated and can only be considered  
 to represent the general condition existing at that time.

The location of navigation aids are based on and provided by  
 the U.S. Coast Guard.



**DISCLAIMER:**  
 The U.S. Army Corps of Engineers (USACE) is not responsible for the use of this data for purposes not intended by the USACE. The USACE makes no warranty, express or implied, for the use of this data for purposes not intended by the USACE. The USACE is not responsible for any damage or loss resulting from the use of this data for purposes not intended by the USACE. The USACE is not responsible for any damage or loss resulting from the use of this data for purposes not intended by the USACE.

KANSAS CITY DISTRICT MISSOURI RIVER AREA OFFICE	
Submitted By:	MIRAO
Reviewed By:	MIRAO
Checked By:	MIRAO

**Survey Information**

MO\_02\_LMR  
 MO\_02\_LMR\_20200929\_CS\_132\_5\_133\_5\_SORT  
 29 September 2020

**Sheet Number**  
 16 of 46